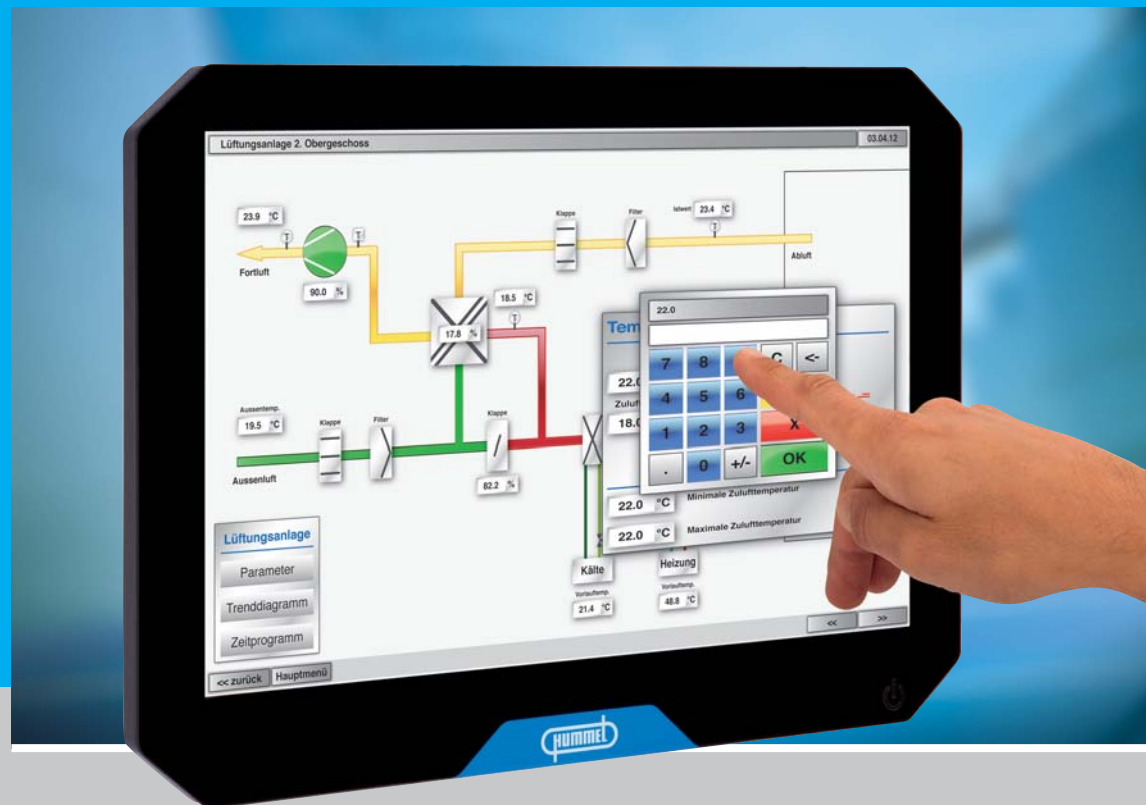


*Setting Standards*

# TOUCHSYSTEMS Made by HUMMEL



■ multitouch ■ capacitive ■ durable

# TOUCHPANEL – Made by HUMMEL

MULTITOUCH Built in-Panel

► 4



MULTITOUCH Standard-Panel

► 5



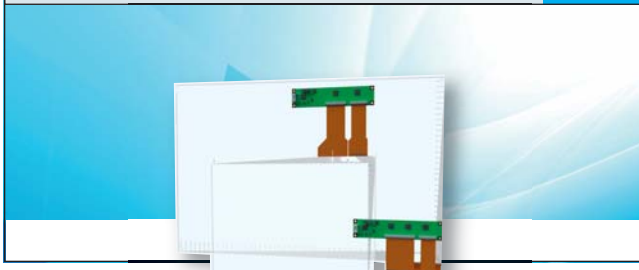
MULTITOUCH Design-Panel

► 6



Touchsensors

► 7



Our Touchsystems are aimed at industrial users, who can choose from a wide range of top-quality products and services.

The product portfolio includes standard systems right up to high-end solutions:

- PCT Touchpanels from 5" to 22" as built-in version or assembled in a housing ready to use. Optional with integrated industrial PC.
- Coverglass with printed frame.
- Optional „Optical bonding“.
- Displays
- System solutions

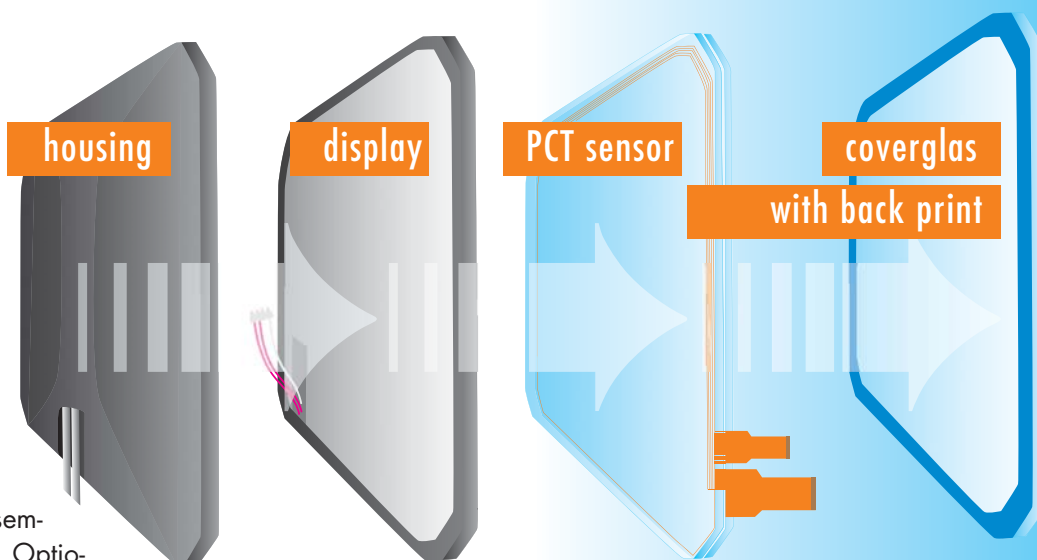
### Customised system solutions are one of our strengths.

HUMMEL boasts a high degree of vertical integration in this area, as it is also the case in its Electro Technology and Electronic business divisions. All products are developed and manufactured in-house.

Typical applications in the industrial area include industrial automation, process control and visualization. HUMMEL Touchsystems can also be used in the food & beverages, pharmaceutical and chemical sectors. These branches of industry in particular have special requirements in terms of sustainability, hygiene and cleanliness.

### Multitouch – robust – hygienic – brilliance

Multitouch Touchpanels with seamless glass fronts feature a scratch-resistant and impact-proof user interface. The optically bonded glass fronts (available on request) together with LED backlight displays ensure a brilliance that has never been achieved before.



In addition, the built-in PCT technology provides an option to construct Touchpanels such as that they can be operated with any type of gloves and controlled by means of gestures. An impact resistance of IK 08 can be achieved even in glass with minimum thickness without impacting on the ease of use.

The tried and tested HUMMEL Circular Connectors achieve a protection class of IP 67 / IP 69K, which means that the Touchpanels are also suitable for high-pressure cleaning. UL and EX certification are available as well.

The housings are fitted with the VESA 100 system and can be supplied with adjustable monitor arm or a pedestal.

## MULTITOUCH Built in-Panel



**Protection** front IP 65 / rear IP 20

**Touch** projected capacitive touch (PCT)

multitouch, operable with gloves

optional: brilliance version

**Temperature range** operating: 0 °C... +60 °C  
storage -20 °C...+ 70 °C

**Attachment** front mounting

### Advice:

- steel plate housing
- glass front with aluminium frame
- without cable set and power supply, Accessories on page 8

Customised solutions on request!

Version	Size	Ratio	Resolution	Dimensions in mm	Frame Dimension in mm	Part Number
Standard	8,4"	4:3	800 x 600	277 x 233 x 67	287 x 243 x 5	6.084.2000.01
Brilliance	8,4"	4:3	800 x 600	277 x 233 x 67	287 x 243 x 5	6.084.2001.01
with IPC	8,4"	4:3	800 x 600	277 x 233 x 67	287 x 243 x 5	6.084.2010.01
Brilliance / with IPC	8,4"	4:3	800 x 600	277 x 233 x 67	287 x 243 x 5	6.084.2011.01
Standard	10,4"	4:3	800 x 600	306 x 254 x 68	316 x 264 x 5	6.104.2000.01
Brilliance	10,4"	4:3	800 x 600	306 x 254 x 68	316 x 264 x 5	6.104.2001.01
with IPC	10,4"	4:3	800 x 600	306 x 254 x 68	316 x 264 x 5	6.104.2010.01
Brilliance / with IPC	10,4"	4:3	800 x 600	306 x 254 x 68	316 x 264 x 5	6.104.2011.01
Standard	12,1"	4:3	1024 x 768	330 x 270 x 68	340 x 280 x 5	6.121.2000.01
Brilliance	12,1"	4:3	1024 x 768	330 x 270 x 68	340 x 280 x 5	6.121.2001.01
with IPC	12,1"	4:3	1024 x 768	330 x 270 x 68	340 x 280 x 5	6.121.2010.01
Brilliance / with IPC	12,1"	4:3	1024 x 768	330 x 270 x 68	340 x 280 x 5	6.121.2011.01
Standard	15"	4:3	1024 x 768	397 x 321 x 73	407 x 331 x 5	6.150.2000.01
Brilliance	15"	4:3	1024 x 768	397 x 321 x 73	407 x 331 x 5	6.150.2001.01
with IPC	15"	4:3	1024 x 768	397 x 321 x 73	407 x 331 x 5	6.150.2010.01
Brilliance / with IPC	15"	4:3	1024 x 768	397 x 321 x 73	407 x 331 x 5	6.150.2011.01
Standard	17"	5:4	1280 x 1024	439 x 371 x 75	449 x 381 x 5	6.170.2000.02
Brilliance	17"	5:4	1280 x 1024	439 x 371 x 75	449 x 381 x 5	6.170.2001.02
with IPC	17"	5:4	1280 x 1024	439 x 371 x 75	449 x 381 x 5	6.170.2010.02
Brilliance / with IPC	17"	5:4	1280 x 1024	439 x 371 x 75	449 x 381 x 5	6.170.2011.02
Standard	19"	16:10	1440 x 900	511 x 358 x 68	521 x 368 x 5	6.190.2000.04
Brilliance	19"	16:10	1440 x 900	511 x 358 x 68	521 x 368 x 5	6.190.2001.04
with IPC	19"	16:10	1440 x 900	511 x 358 x 68	521 x 368 x 5	6.190.2010.04
Brilliance / with IPC	19"	16:10	1440 x 900	511 x 358 x 68	521 x 368 x 5	6.190.2011.04
Standard	22"	16:10	1680 x 1050	580 x 402 x 70	590 x 412 x 5	6.220.2000.04
Brilliance	22"	16:10	1680 x 1050	580 x 402 x 70	590 x 412 x 5	6.220.2001.04
with IPC	22"	16:10	1680 x 1050	580 x 402 x 70	590 x 412 x 5	6.220.2010.04
Brilliance / with IPC	22"	16:10	1680 x 1050	580 x 402 x 70	590 x 412 x 5	6.220.2011.04

## MULTITOUCH Standard-Panel

Protection	IP 20
Touch	projected capacitive touch (PCT)
	multitouch, operable with gloves
	optional: brilliance version
Temperature range	operating: 0 °C... +60 °C storage -20 °C...+ 70 °C
Attachment	VESA 100 system

### Advice:

- steel plate housing, powder-coated black
- glass front with aluminium frame
- without cable set and power supply, Accessories on page 8

Customised solutions on request!



Version	Size	Ratio	Resolution	Dimensions in mm	Part Number
Standard	12,1"	4:3	1024 x 768	330 x 270 x 65	6.121.1000.01
Brilliance	12,1"	4:3	1024 x 768	330 x 270 x 65	6.121.1001.01
with IPC	12,1"	4:3	1024 x 768	330 x 270 x 65	6.121.1010.01
Brilliance / with IPC	12,1"	4:3	1024 x 768	330 x 270 x 65	6.121.1011.01
Standard	15"	4:3	1024 x 768	397 x 321 x 69	6.150.1000.01
Brilliance	15"	4:3	1024 x 768	397 x 321 x 69	6.150.1001.01
with IPC	15"	4:3	1024 x 768	397 x 321 x 69	6.150.1010.01
Brilliance / with IPC	15"	4:3	1024 x 768	397 x 321 x 69	6.150.1011.01
Standard	17"	5:4	1280 x 1024	439 x 371 x 75	6.170.1000.02
Brilliance	17"	5:4	1280 x 1024	439 x 371 x 75	6.170.1001.02
with IPC	17"	5:4	1280 x 1024	439 x 371 x 75	6.170.1010.02
Brilliance / with IPC	17"	5:4	1280 x 1024	439 x 371 x 75	6.170.1011.02
Standard	19"	16:10	1440 x 900	511 x 358 x 68	6.190.1000.04
Brilliance	19"	16:10	1440 x 900	511 x 358 x 68	6.190.1001.04
with IPC	19"	16:10	1440 x 900	511 x 358 x 68	6.190.1010.04
Brilliance / with IPC	19"	16:10	1440 x 900	511 x 358 x 68	6.190.1011.04
Standard	22"	16:10	1680 x 1050	580 x 402 x 70	6.220.1000.04
Brilliance	22"	16:10	1680 x 1050	580 x 402 x 70	6.220.1001.04
with IPC	22"	16:10	1680 x 1050	580 x 402 x 70	6.220.1010.04
Brilliance / with IPC	22"	16:10	1680 x 1050	580 x 402 x 70	6.220.1011.04

## MULTITOUCH Design-Panel



Protection	IP 65 / IP 69 K
Touch	projected capacitive touch (PCT)
	multitouch, operable with gloves
	brilliance version
Temperature range	operating: 0 °C... +60 °C storage -20 °C...+ 70 °C
Attachment	VESA 100 system

**Advice:**

- aluminium housing, powder-coated black
- glass front with black printed frame and white „HUMMEL“ logo
- with cable set and power supply

**Customised solutions on request!**

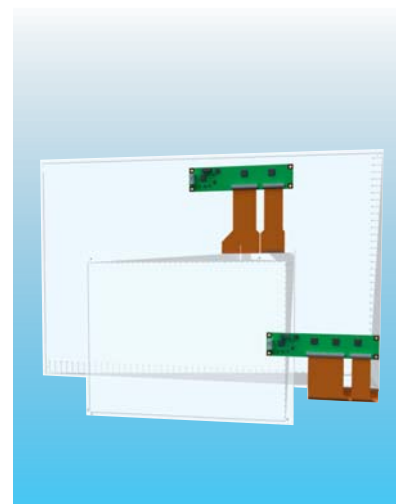


Version	Size	Ratio	Resolution	Dimensions in mm	Part Number
Brilliance	19"	16:10	1440 x 900	480 x 335 x 50	6.190.5001.04
Brilliance / with IPC	19"	16:10	1440 x 900	480 x 335 x 50	6.190.5011.04
Brilliance	22"	16:10	1680 x 1050	565 x 370 x 50	6.220.5001.04
Brilliance / with IPC	22"	16:10	1680 x 1050	565 x 370 x 50	6.220.5011.04

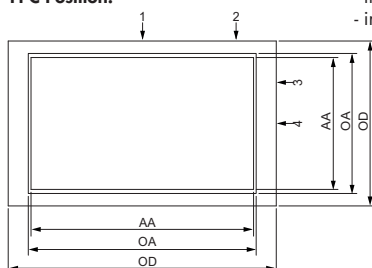
## Touchsensors

**Touch:** projected capacitive touch (PCT)

multitouch






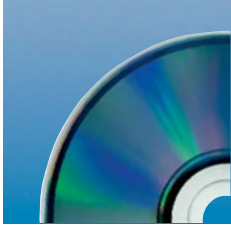
**FPC Position:**



**Advice:**

- incl. USB-controller
- incl. FPC (Flexible Printed Circuit Connector)

Size	Ratio	Active Area in mm	Open Area in mm	Outside Dimensions in mm	FPC Position	Part Number
5,7"	4:3	115,3 x 86,5	117,3 x 88,5	133,46 x 101,95	3	6.057.3000.31
6,5"	4:3	133,6 x 100,2	135,6 x 102,0	152,20 x 117,30	3	6.066.3000.31
7"	16:10	152,1 x 93,6	153,2 x 94,5	168,52 x 107,37	3	6.070.3000.34
8"	5:3	173,4 x 104,0	177,4 x 107,0	190,85 x 119,29	3	6.080.3000.35
8,4"	4:3	174,8 x 133,7	175,0 x 133,9	192,60 x 149,04	2	6.087.3000.21
9"	16:9	195,0 x 117,0	196,0 x 118,0	218,92 x 138,00	3	6.090.3000.36
10,1"	16:9	220,4 x 129,2	223,4 x 132,2	248,92 x 151,45	4	6.101.3000.46
10,4"	4:3	211,2 x 158,4	214,5 x 162,4	231,65 x 184,89	2	6.104.3000.21
12,1"	16:10	261,1 x 163,2	263,1 x 165,2	284,52 x 193,10	2	6.121.3000.24
12,2"	4:3	248,0 x 186,5	249,5 x 188,0	265,50 x 208,00	2	6.122.3000.21
15"	4:3	304,1 x 228,1	307,6 x 231,6	329,25 x 256,40	2	6.150.3000.21
15,4"	16:10	331,3 x 207,0	334,3 x 210,0	352,20 x 234,30	2	6.154.3000.24
15,6"	16:9	344,2 x 193,5	346,2 x 197,0	369,00 x 234,38	1	6.155.3000.16
17"	5:4	339,0 x 271,2	341,0 x 273,2	372,30 x 302,80	2	6.171.3000.22
18,5"	16:9	413,4 x 234,0	413,6 x 234,2	437,50 x 266,90	2	6.187.3000.26
19"	5:4	376,0 x 304,0	377,2 x 305,2	398,03 x 329,18	2	6.190.3000.22
19"	16:10	410,0 x 256,0	412,0 x 258,0	429,69 x 283,20	2	6.190.3000.24
21,6"	16:9	478,6 x 271,2	480,1 x 272,7	500,00 x 303,32	2	6.217.3000.26
22"	16:10	473,8 x 296,1	479,7 x 302,1	500,00 x 336,07	2	6.220.3000.24

Accessories	Type	Part Number
	Dataflex adjustable monitor arm with VESA 100 system .....	6.000.0002.00
	Power Supply 230V .....	6.000.0003.00
	VESA 100 System adapter plate for Multitouch Standard-Panel .....	6.000.0007.00
	Operating System .....	on request



## Coverglass





Setting Standards

[www.hummel.com](http://www.hummel.com)

# HUMMEL AG



As a medium-sized enterprise with an international outlook HUMMEL AG has a world-wide reputation as a manufacturer of touch systems, electro-mechanical installation systems, electronics for medical and MSR technology and fittings for the heating industry.

HUMMEL provides all: development, construction, tool-making, manufacturing, electroplating and assembly all under one roof, thus guaranteeing concentrated expertise and efficient processes. Being able to supply everything from one source means that HUMMEL can offer its customers from industry and technology the fast and flexible system solutions they need and a broad range of high-quality products. The HUMMEL product range includes:

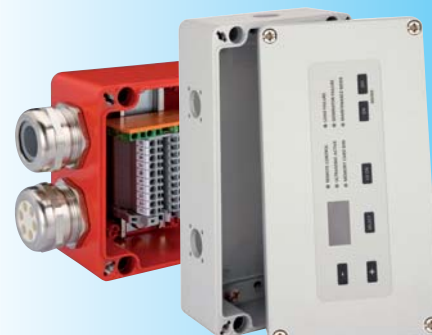
- touch sensors, touch panels and touch systems
- circular connectors, enclosure systems, cable glands, cable protection systems, including for outdoor applications
- temperature regulators, operating panels, battery-charging technology, sensors, controls
- system solutions, front panels, enclosure machining, cable manufacture
- customized metal and plastic parts
- fittings for heating systems
- measurement devices for usage in ophthalmology

HUMMEL has been expanding its operation for a number of years and attributes its market success to the fact that it has consistently lived up to its "setting standards" motto across all areas of its operation. Evidence of this includes the company's many patents, its constant new developments and refinements, its high vertical integration, the flexibility of its special applications, high manufacturing quality and, of course, its long tradition of having an international focus.

In all its activities, the company maintains a clear commitment to its site in Germany which is why it has invested to a great extent at its headquarters in Denzlingen and, with an eye to the future, has recently spent over 15 million euros on new, modern buildings and production facilities. As well as its international headquarters in Denzlingen and its historical base in Waldkirch, HUMMEL also has a number of subsidiaries and sales offices in many parts of the world.



Zeichnung gegen  
Foto austauschen





# HUMMEL Divisions

## Electro Technology

Touchpanels - Solutions - Custom fabrication of Enclosures  
Industrial Enclosures - Cable Glands - Cable Protection - Circular Connectors



## Electronic

Operator Panels - Frontsheets and Keyboards - Battery Chargers  
Cable Assembly - Sensors - Controls - Systems Solutions - Temperature Controllers



## Heating Equipment

Solar Heating - Valves and Fittings - Compression Fittings  
Heat Pumps - Thermostatic Heads



## Customised

Parts made of Metal and Nylon



[www.hummel.com](http://www.hummel.com)

### HUMMEL AG

Division ET  
Lise-Meitner-Straße 2  
79211 Denzlingen  
Germany

Tel. +49 (0)76 66 / 9 11 10-0  
Fax +49 (0)76 66 / 9 11 10-20  
E-Mail [info.et@hummel.com](mailto:info.et@hummel.com)

### HUMMEL AG

Lise-Meitner-Straße 2  
79211 Denzlingen  
Germany  
[www.hummel.com](http://www.hummel.com)

